

Regulated Related Party Model

Disclosure Year Ended 30 June 2023

Pursuant to:
Gas Distribution Information Disclosure Determination 2012 (consolidated April 2018)

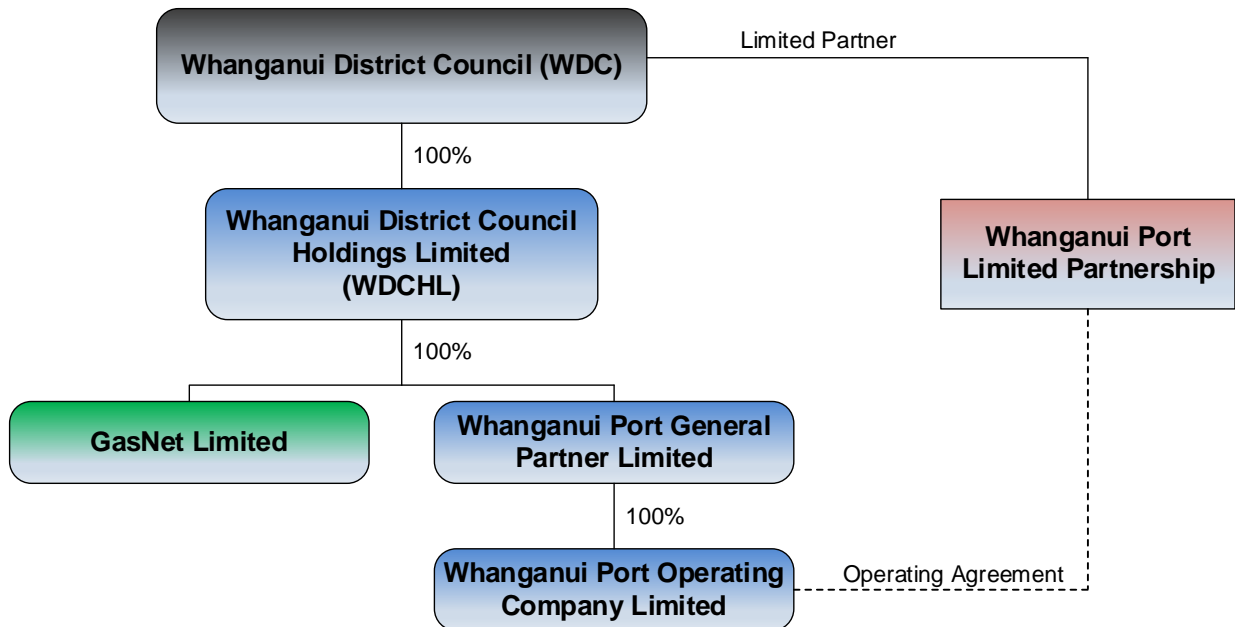


Figure 1: The connection between GasNet (GDB) and the related party - Disclosure 2.3.8 (1)

Related Party	Principal Activities (Disclosure 2.3.8 (2))	Total Annual Expenditure (\$'000 excl. GST) (Disclosure 2.3.8 (3))
Whanganui District Council (WDC)	WDC provides infrastructure services for the ratepayers of the Whanganui District and owns 100% of the shares in Whanganui District Council Holdings Limited (WDCHL). Transactions and services provided by WDC include: <ul style="list-style-type: none"> • Tenancy services as landlord of GasNet's premises in Cooks Street, Whanganui (up to 31-Jan-23). • Computer network infrastructure services. • Payroll services. • Rating of GasNet's infrastructure. • Sponsorship of NZ Glassworks (100% owned by WDC). • Cost sharing joint trench sharing opportunities. 	\$174
Whanganui District Council Holdings Limited (WDCHL)	WDCHL is a Council Controlled Organisation that's role is to manage and oversee the Council's commercial investment assets, which includes its 100% ownership of GasNet Limited. There were no transactions between GasNet and WDCHL in the 2022/23 disclosure year	\$0
Whanganui Port Limited Partnership (WPLP)	WPLP is a Limited Partnership arrangement between WDC and Kānoa (MBIE's Regional Economic Development & Investment Unit). On 1-Apr-22 GasNet's premises in Cooks Street, Whanganui were transferred from WDC to WPLP with the result that WPLP became GasNet's landlord for the Cooks Street premises. Invoicing for tenancy services changed over from WDC to WPLP on 1-Feb-23.	\$36
TOTAL		\$210